



Registration 2014-2015 Conference Year

The registration fee for each conference is \$150 or \$450 for the entire series.

To register online, go to
<http://go.iu.edu/dcY>

Questions?
Call 812.855.4224

Full time students registered at an accredited Indiana institution of higher learning may attend at no cost thanks to conference sponsors. To register, email the Center for the Business of Life Sciences at lifesc@indiana.edu.



KELLEY SCHOOL OF BUSINESS
INDIANA UNIVERSITY
Center for the Business of Life Sciences

2014-2015

Indiana Life Sciences Collaboration Sponsors

Series Sponsors



Primary Sponsors



Supporting Sponsors



Marketing Sponsors

Commissioning Agents, Inc.
Indiana Health Information Exchange
Indiana University College of Arts & Sciences
Indiana University Kelley School of Business Alumni Association
Indiana University Research and Technology Corporation

Indiana University School of Informatics and Computing
Iotron Industries
Novus Biologicals, LLC
OrthoWorx, Inc.

The Business of Life Sciences

Industry + Academia + Government



2014 / 2015



Indiana Life Sciences
Collaboration Conference Series





Goal

The Indiana Life Sciences Collaboration Conference Series, coordinated by the IU Kelley School of Business' Center for the Business of Life Sciences, provides a forum for various players in healthcare and life sciences to strategically consider key business issues. Executives, scientists, medical practitioners, researchers, policymakers and academics drawn from a wide range of backgrounds all contribute to the discussion. Conferences are organized for attendees to increase their knowledge AND have the opportunity to make new connections across the life sciences spectrum.

<http://kelley.iu.edu/CBLS/>

2014-2015 Indiana Life Sciences Collaboration Series

1

An Update on the FDA and Global Regulatory Bodies

September 12, 2014

Location:

IU Robert H. McKinney School of Law
530 W. New York Street, Indianapolis, IN 46202

Series Sponsors

BioCrossroads
Covance
Global Quantum Leap
IU Kelley, Center for the Business of Life Sciences

Primary Sponsors

Faegre Baker Daniels LLP
Indiana Economic Development Corporation

Supporting Sponsors

Hylant
IU Robert H. McKinney School of Law



Pearl Pathways, LLC
Zimmer

Performance Validation

Regulatory bodies continue to modify and create new procedures for approving products and managing quality compliance. At the same time, reimbursement considerations are becoming more and more critical. How do these affect the path new products must go through for first launch? What about new types of products and novel technologies? How are strengthened quality requirements affecting operations – both domestically and overseas? Experienced industry professionals will share their perspectives as to where they feel things are going.

2

A New Healthcare Delivery Model: Implications of the Continuing Consolidation of Providers

November 21, 2014

Location:

The Indiana Center for the Life Sciences
501 N. Profile Parkway
Bloomington, IN 47404

Series Sponsors

BioCrossroads
Covance
Global Quantum Leap
IU Kelley, Center for the Business of Life Sciences

Primary Sponsors

Biomet
Fort Wayne Metals
Helmer Scientific
Omnicare

Supporting Sponsors

ArjoHuntleigh
Bloomington Life Sciences Partnership
Ivy Tech Community College



As healthcare providers continue to aggregate, especially in larger markets, what is most likely to be seen? What will be the projected effects on pricing and quality of care? How will payers and finished goods manufacturers respond? Sorting through their competing and complementary priorities will be the focus of this conference.

3

Mobile Healthcare: Where Does New IT Intersect with Healthcare?

February 20, 2015

Location:

IU School of Medicine, Fairbanks Hall
340 W. 10th Street, Indianapolis, IN 46202

Series Sponsors

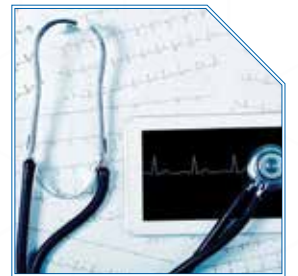
BioCrossroads
Covance
Global Quantum Leap
IU Kelley, Center for the Business of Life Sciences

Primary Sponsors

BioStorage Technologies
Hill-Rom
IU Health
Indiana Clinical and Translational Sciences Institute

Supporting Sponsors

Indiana Business Journal
Indiana University Office of the Vice President for Engagement



Purdue University
Roche Diagnostics
Taft Stettinius & Hollister LLP

The development and widespread use of "smart phones" in the marketplace has major implications. What is the impact of wearable technology on healthcare? Will it be self-diagnosis or physician driven? What about its use in clinical trials? Industry executives and observers will offer their thoughts as to how much evaluation, monitoring and diagnosis can and should be in the palm of one's hand.

4

The Changing Role of the Consumer in Healthcare

May 8, 2015

Location:

MED Institute, a Cook Group Company
Purdue Research Park
1 Geddes Way, West Lafayette, IN 47906

Series Sponsors

BioCrossroads
Covance
Global Quantum Leap
IU Kelley, Center for the Business of Life Sciences

Primary Sponsors

Cook Medical
Ice Miller LLP
Eli Lilly & Company
MedVenture Technology

Supporting Sponsor

VMS BioMarketing



More responsibility for healthcare continues to shift to consumers. The relationship with providers is becoming less prescriptive and more of a partnership. Are both sides ready for such a shift? What do medical products companies see as the effects and how will they respond?